

Monocrystalline Solar Module

475W-500W Mono

182MM Cell 132 Half-cell Layout

黄山银洽新能源

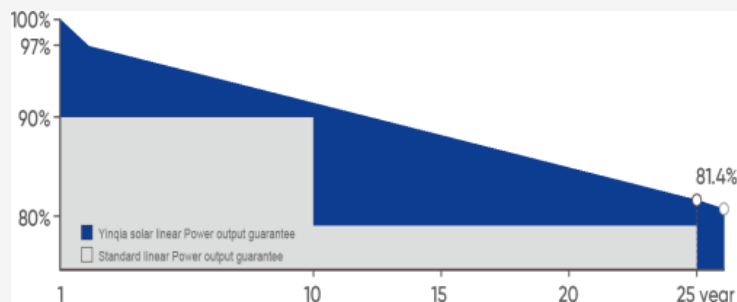
YinQia SOLAR

Features

- ◆ High cell efficiency with quality silicon material for long term output stability and reliability
- ◆ Rigorous quality control to meet highest international standards
- ◆ High transmittance low iron tempered glass with enhanced Stiffness and impact resistance
- ◆ Unique frame design with high mechanical strength for easy installation
- ◆ Advanced encapsulation material with multi-layer sheet lamination to provide efficient protection from the severest environmental conditions
- ◆ Outstanding electrical performance under high temperature and low irradiance conditions

Applications

- ◆ Any large or small on-grid or off-grid solar power stations
- ◆ Commercial and industrial building roof-top systems
- ◆ Residential roof-top systems
- ◆ Any commercial or industrial ground mount systems
- ◆ Other industrial or commercial applications



Linear performance Warranty

12
YEARS

Quality
Warranty

25
YEARS

Power
Warranty



- . ISO9001:2015QMS
- . ISO14001:2015EMS
- . ISO45001:2018OHSMS
- . IEC/EN 61215, IEC/EN 61730 Standard

HUANGSHAN YINQIA NEW ENERGY TECHNOLOGY CO.,LTD.

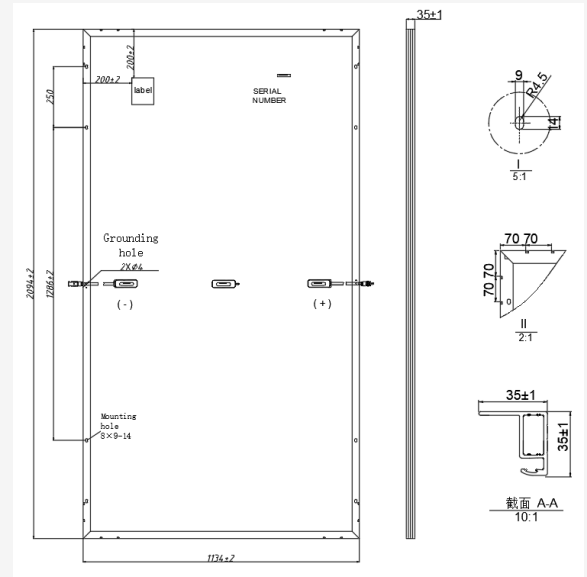
ADD: YANGXI ROAD, HUANGSHAN INDUSTRIAL PARK, HUANGSHAN REGION, HUANGSHAN, ANHUI, CHINA

TEL: +86 559 8515292 | FAX: +86 559 8515296 | sales@yinqiasolar.com

www.yinqiasolar.com

MECHANICAL CHARACTERISTICS

| | |
|----------------------|---|
| Solar Cells | Mono |
| NO.of Cells | 132(6×22) |
| Dimensions | 2094×1134×35mm |
| Weight | 26kgs |
| Front Glass | 3.2mm coated tempered glass |
| Frame | Anodized aluminium alloy |
| Junction Box | Ip68 rated(3 by pass diodes) |
| Output Cables | 4.0mm ² 300mm Length can be customized |
| Connectors | Mc4 compatible |
| Mechanical load test | 5400Pa |



ELECTRICAL PARAMETERS

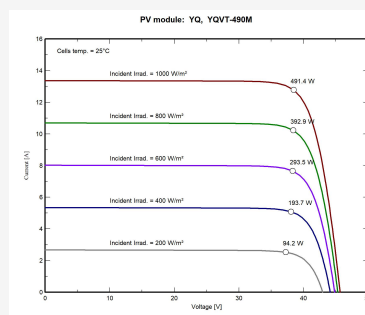
| POWER CLASS | YQVT-475M | | YQVT-485M | | YQVT-490M | | YQVT-495M | | YQVT-500M | |
|---------------------------------|-----------|--------|-----------|--------|-----------|--------|-----------|--------|-----------|--------|
| | STC | NOCT | STC | NOCT | STC | NOCT | STC | NOCT | STC | NOCT |
| Maximum power (Pmax) | 475W | 356W | 485W | 364W | 490W | 367W | 495W | 371W | 500W | 375W |
| Open Circuit Voltage (Voc) | 44.8V | 42.57V | 45.02V | 42.85V | 45.13V | 42.99V | 45.28V | 43.06V | 45.41V | 43.24V |
| Short Circuit Current (Isc) | 13.07A | 11.01A | 13.25A | 11.17A | 13.36A | 11.25A | 13.47A | 11.34A | 13.58A | 11.41A |
| Voltage at Maximum power (Vmpp) | 37.52V | 34.89V | 37.77V | 35.13V | 37.89V | 35.24V | 37.95V | 35.29V | 38.11V | 35.44V |
| Current Maximum Power (Impp) | 12.66A | 10.21A | 12.84A | 10.36A | 12.93A | 10.43A | 13.04A | 10.52A | 13.12A | 10.58A |
| MODULE EFFICIENCY (%) | 20.0 | | 20.4 | | 20.6 | | 20.8 | | 21.0 | |

STC:Irradiance 1000W/m²,cell temperature 25°C,AM 1.5G NOCT:Irradiance 800W/m²,ambient temperature 20°C,wind speed 1m/s,AM 1.5G

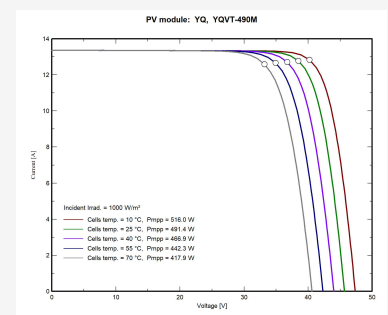
PACKING CONFIGURATION

| | | |
|-----------------------|--------------|--------------|
| Container | 20'GP | 40'HQ |
| Pieces per pallet | 31 | 31+31 |
| Pallets per container | 8 | 10 |
| Pieces per container | 248 | 620 |
| Dimension/Pallet | 1214×1138 mm | 2155×1138 mm |
| Gross weight/pallet | 828Kg | 1660Kg |

I-V CURVE



YQVT-490M/I-V



OPERATING CHARACTERISTICS

| | |
|------------------------------|----------------|
| Operating Module Temperature | -40°C to +85°C |
| Maximum System Voltage | 1500 DC (IEC) |
| Maximum Series Fuse Rating | 20A |
| Power Tolerance | 0/+5W |

TEMPERATURE CHARACTERISTICS

| | |
|--------------------------------------|-----------|
| Nominal Operating Temperature (NOCT) | 45±2°C |
| Temperature Coefficient of Pmax | -0.36%/°C |
| Temperature Coefficient of Voc | -0.28%/°C |
| Temperature Coefficient of Isc | +0.05%/°C |

Note: Due to continuous technical innovation, R&D and improvement, technical data above mentioned may be of modification accordingly. YQ SOLAR have the sole right to make such modification at anytime without further notice.